



WOODLARK 4 BEDROOM HOUSE

Plot Numbers

28 | 29 | 30 | 31* | 32* | 33*

34 | 35 | 36

*Plots are handed

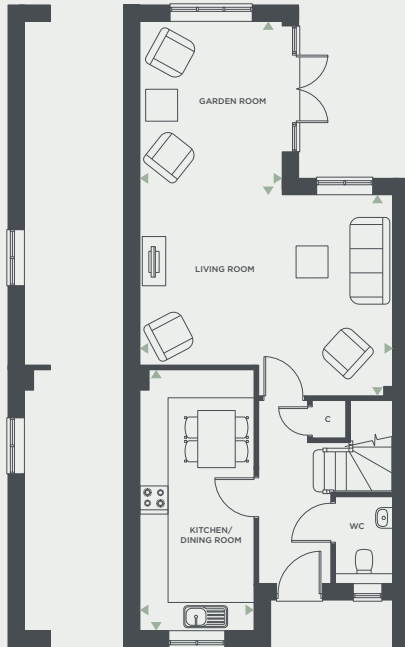
KEY — C: Cupboard | AC: Airing Cupboard | W: Wardrobe

Floorplans are not to scale and are indicative only. Location of windows, doors, bathroom fittings, kitchen units and appliances may differ. Dimensions given are approximate and should not be used to order carpets or furniture. Balcony and terrace sizes and locations may differ from those illustrated.

DIMENSIONS

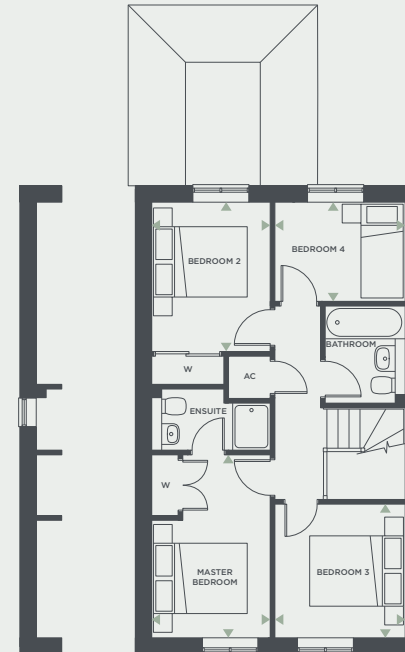
Kitchen / Dining Room	2.48m x 5.60m	8'2" x 18'4"
Living Room	5.45m x 3.67m	17'10" x 12'0"
Garden Room	3.08m x 3.70m	10'1" x 12'2"
Master Bedroom	2.56m x 3.95m	8'5" x 12'11"
Bedroom 2	2.56m x 3.22m	8'5" x 10'7"
Bedroom 3	2.81m x 2.89m	9'3" x 9'6"
Bedroom 4	2.81m x 2.15m	9'3" x 7'1"
Net internal area	110.90 sq m	1193.71 sq ft

Windows - Plot Numbers 30,31 and 36 only



Ground Floor

Windows - Plot Numbers 30, 31 and 36 only



First Floor

BROOKFIELDS

BROOKFIELDS, STANE STREET, PULBOROUGH, WEST SUSSEX, RH20 | 01798 849 302 | BROOKFIELDS-PULBOROUGH.CO.UK

BROOKFIELDS
PULBOROUGH, WEST SUSSEX

WOODLARK
4 BEDROOM HOUSE

Plot Numbers

28 | 29 | 30 | 31* | 32* | 33*

34 | 35 | 36

*Plots are handed



Map is indicative only and not to scale.